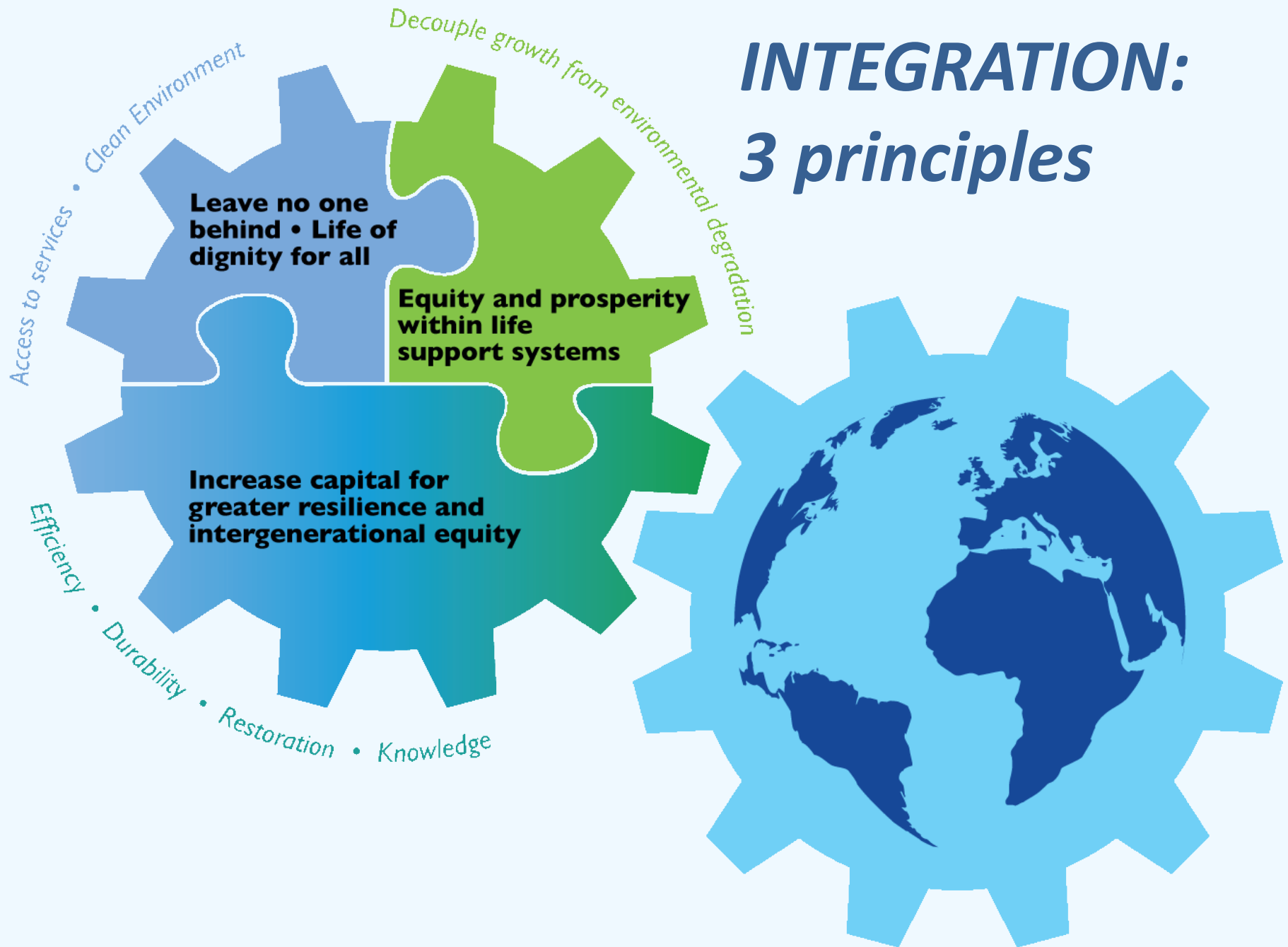


INTEGRATION: **3 principles**



Today we work in silos & sectors



Social Development



Infant mortality



Economic Development



Youth employment



Environmental Sustainability



Healthy ecosystems



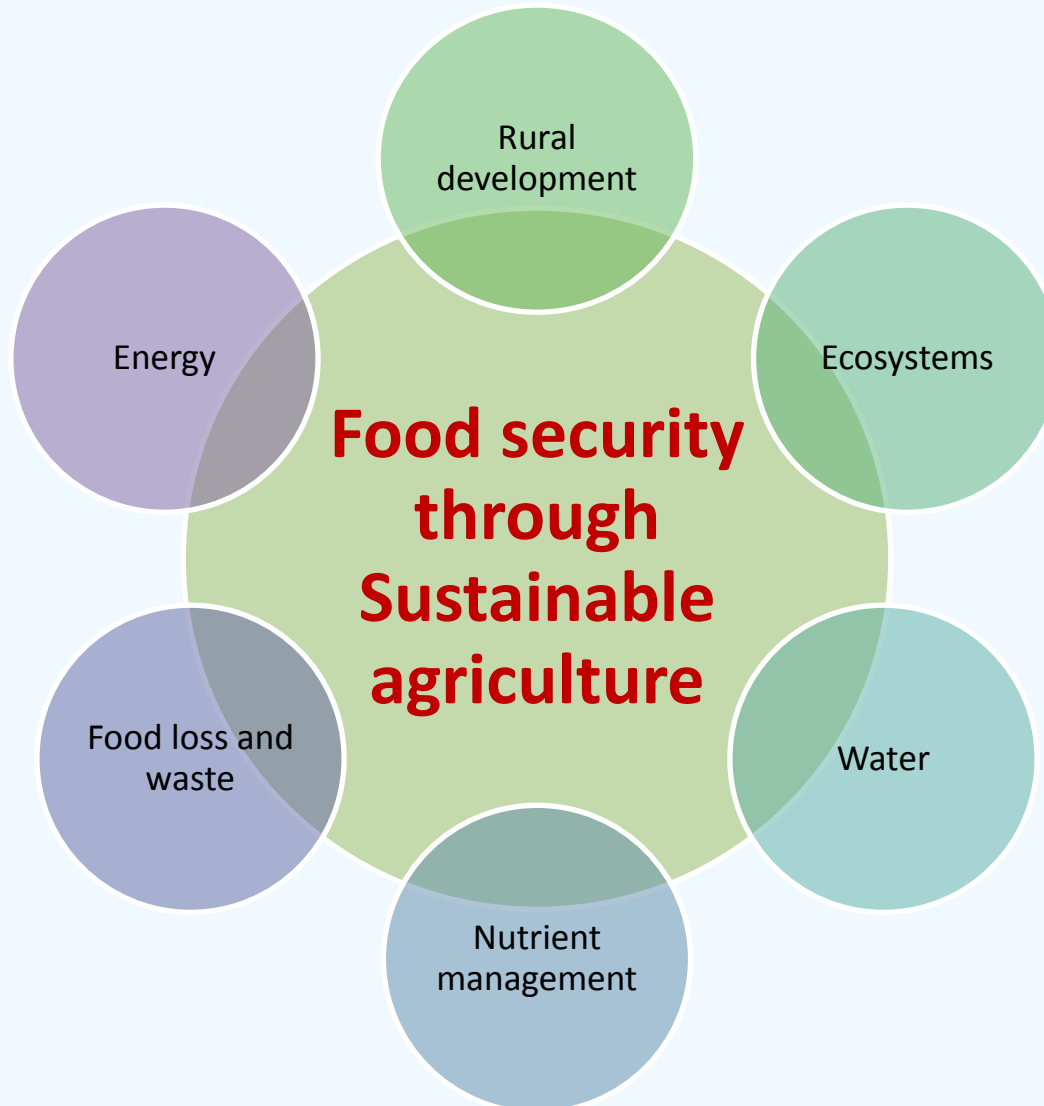
Governance, peace and security



Peace for all



Integration through clustering



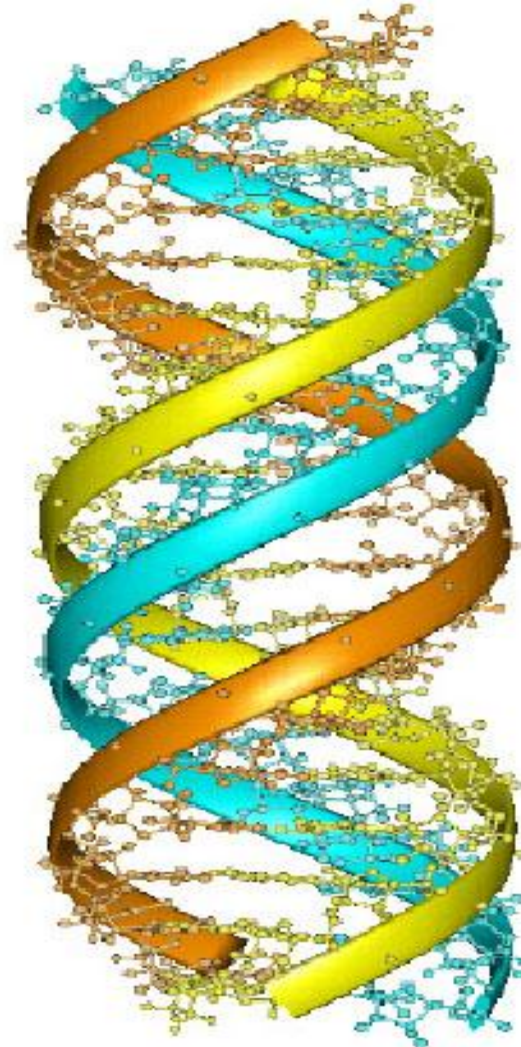
Holistic approach



**Fully integrated
and complex**

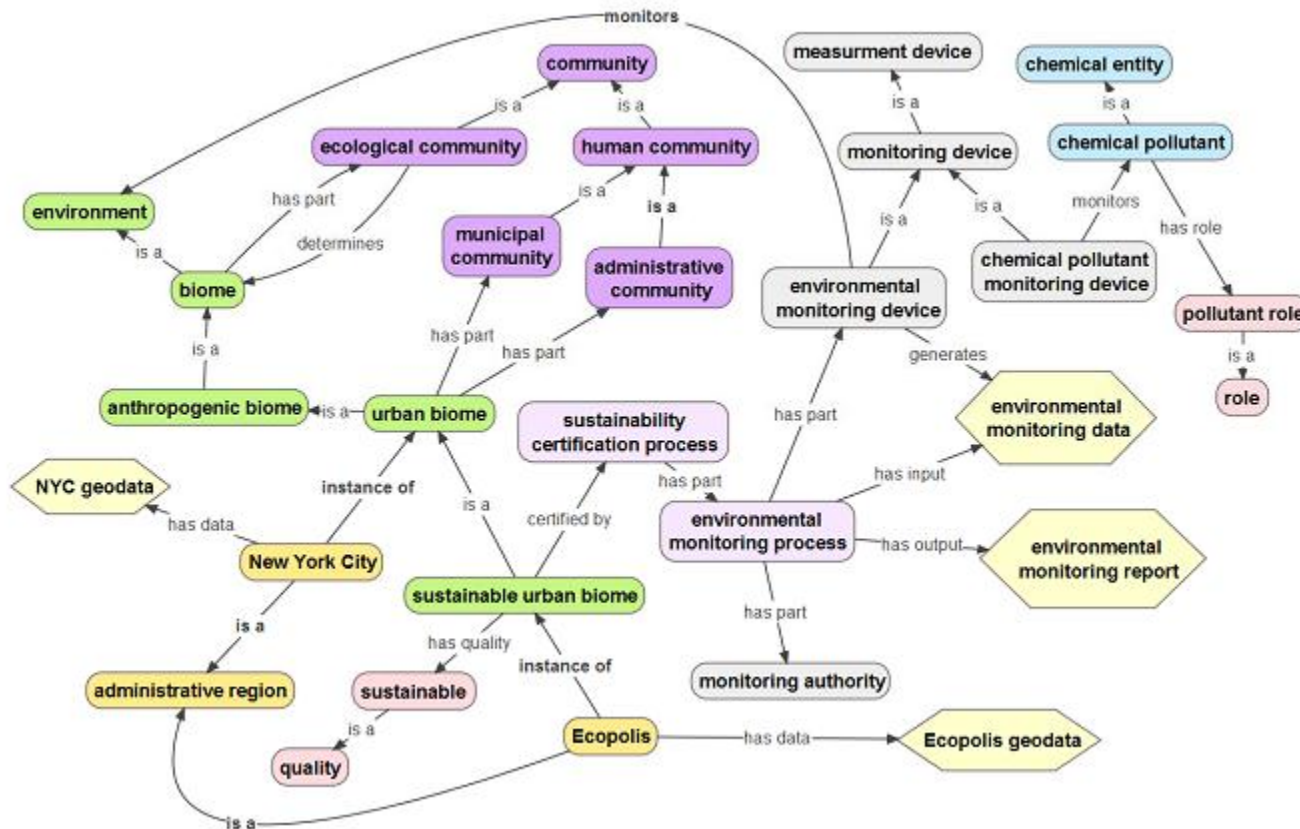
**Focus on
fundamental
drivers of
change**

**Manage trade-
offs and
synergies**

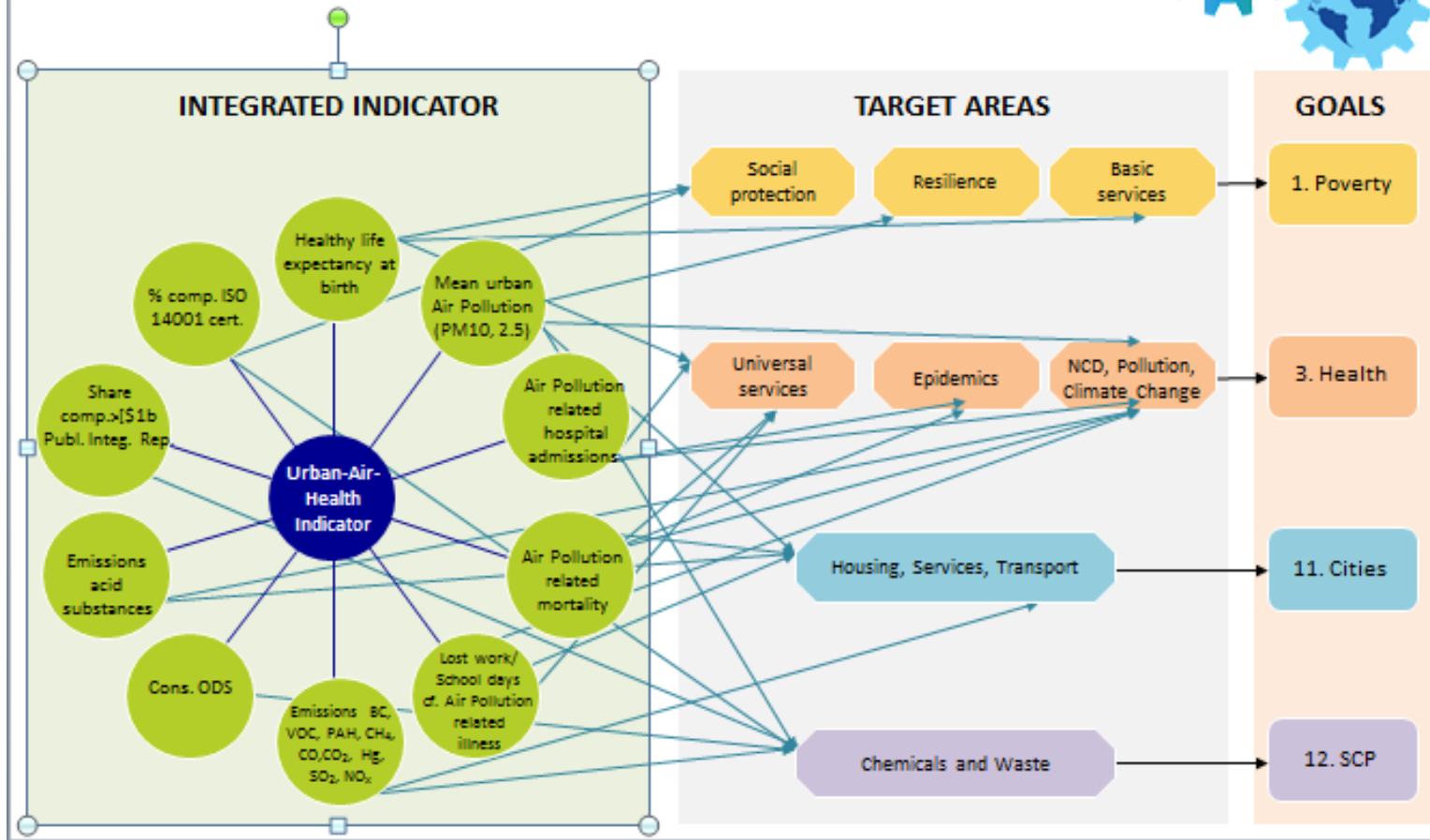


Ontology for urban monitoring and UNEP Live

Classes from environmental (green), chemical (blue), gazetteer (yellow), and community (purple) ontologies, other classes created as needed (grey). Both instance-level (e.g. objects present in the real world) and class-level (e.g. an urban biome with common properties). Data, documents, or other informational entities (pale yellow hexagons) can be linked into this web for semantically-aware mobilisation



Urban air quality health indicator



Integrated well-defined indicators to measure all SDG targets, linking social, economic and environmental variables, and making those goals and targets better integrated, and more synergistic